



**The Reno Wheelmen**  
a cycling tradition since 1896



# 2011 MTB Twilight Race Series

and

Sierra Youth Cycle League (FREE Races for Kids!)



Thursday, April 28	6:30 pm	Hidden Valley Regional Park	SYCL
Thursday, May 5	6:30 pm	Keystone Canyon (Hoge Rd.)	SYCL
Thursday, May 12	6:30 pm	Keystone Canyon (Hoge Rd.)	SYCL
Thursday, May 26	6:30 pm	Hidden Valley Regional Park	SYCL Finals
Thursday, June 9	6:30 pm	Halo Trail (West Keystone)	
Thursday, June 16	6:30 pm	Peavine Hillclimb	
Thursday, June 23	6:30 pm	Keystone Canyon (Hoge Rd.)	
Thursday, June 30	6:30 pm	Sky Tavern	



**REGISTRATION:** Entry Fee is \$10 (cash only) at each race or an 8 race **series pass available online at [www.bikereg.com](http://www.bikereg.com) for \$40.** Juniors (18 & under) and Women race for **FREE!** Sign one release form for the series, please use the same race number we give you for the entire series. Registration opens at 6PM at all races. 2011 Twilight release form available for printing [here](#).



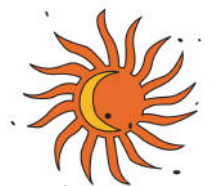
**CATEGORIES:** A, B, C, Juniors\*, Women A/B, Women C  
 - *Category A:* advanced riders with excellent fitness and race experience  
 - *Category B:* competitive riders with strong fitness and some race experience  
 - *Category C:* fit riders who are learning competitive cycling  
 \*Junior category only at last four events after SYCL ends.

Sierra Youth Cycle League Categories: Boys and Girls in each age group- Middle School (ages 10-14), JV(ages 15-16), Varsity (ages 17-18). Individual and School points series.



**COURSES:** Expect a 2 to 6 mile lap distance. A's will do about 15 miles, B's/Women A/B about 10 miles, and C's /Junior/SYCL/Women C around 5 miles.

**PRIZES:** Cash/Awards/and/or prizes to top 3 in the points series for each category. Men's A and Women's A/B series winners get a cruiser bike from Black Rock Bicycles! Small product giveaway at each race!!!!



ECLIPSE PIZZA CO.

**RULES:** Trails are open to other users, please be courteous to other trail users, participants, spectators, motorists, and volunteers. Wear your HELMET at all times. Points awarded relative to placing at each race.

Series Points: 1st 2nd 3rd 4th 5th 6th 7th 8th 9th 10th 11th+  
 30 26 22 20 18 16 14 12 11 10 10

If you upgrade during the series, point total for higher category will be half old total. Ties in points will be determined by finishing place in last event. Last race is double points.

**DIRECTIONS:**

Keystone Canyon: North on North Virginia Street, just past Bonanza Casino turn left on Hoge Road, take to end, continue on dirt past USFS boundary. Don't park in driveways to houses.

Halo Trail: From Hwy 80, North on N. Virginia St, Left on North McCarran, right on Leadership Parkway(at Keystone Ave.), pass the first parking lot for East Keystone Trailhead, continue until the road ends, park in the gravel at the West Keystone Trailhead.

Peavine Hill Climb: Take US 395 north towards Stead, take Stead Blvd south, turn right on North Virginia Street, after 1/2 mile turn left on the Peavine Access Road (dirt, marked with a cone), park before the railroad tracks.

Hidden Valley: From South McCarran, head east on Pembroke, right on Parkway, pass through the park gates, left on park road, park in the parking lot at the top at the hill.

Sky Tavern: From Reno, Take Hwy. 431 (Mt Rose Hwy) up the hill. Sky Tavern is on the right after the hairpin with the NDOT shed. If you come to the Mt. Rose Ski Area, you went to far.

**QUESTIONS:** E-mail Kevin at [mtb11@renowheelmen.org](mailto:mtb11@renowheelmen.org)

Stay up to date on facebook - '[Reno Mountain Bike Twilight Races](#)'

